



ARCTIC STAR REFRIGERATED PRODUCT RANGE

ARCTIC STAR

Montracon

-28° FREEZER

KEY FEATURES

- FULL MAINRAIL CHASSIS
- EBS BRAKE SYSTEM
- STAINLESS STEEL REAR FRAME

CONFIGURATIONS

- MULTI-TEMP
- DOUBLE LOADER
- B-DOUBLE
- ROAD TRAIN



Southern Cross Transport Equipment Group teamed up with British company Montracon Ltd to introduce a new series of Refrigerated Transport Equipment in Australia.

Manufactured in the United Kingdom, the “Arctic Star Montracon” series has been designed in co-operation with Southern Cross’s local engineering team to meet the harsh requirements of the Australian Market and Specific Australian Design Rules.

You’ll still have the flexibility to specify your preferred:

- Air Suspension
- Axles
- Refrigeration Unit Combination



Full Main Rail Chassis



Heavy Duty Rear Dock Compression Member



Underside Run Protection or Aero Skirts (as above)

NOT JUST ANOTHER IMPORT

ADR
compliance

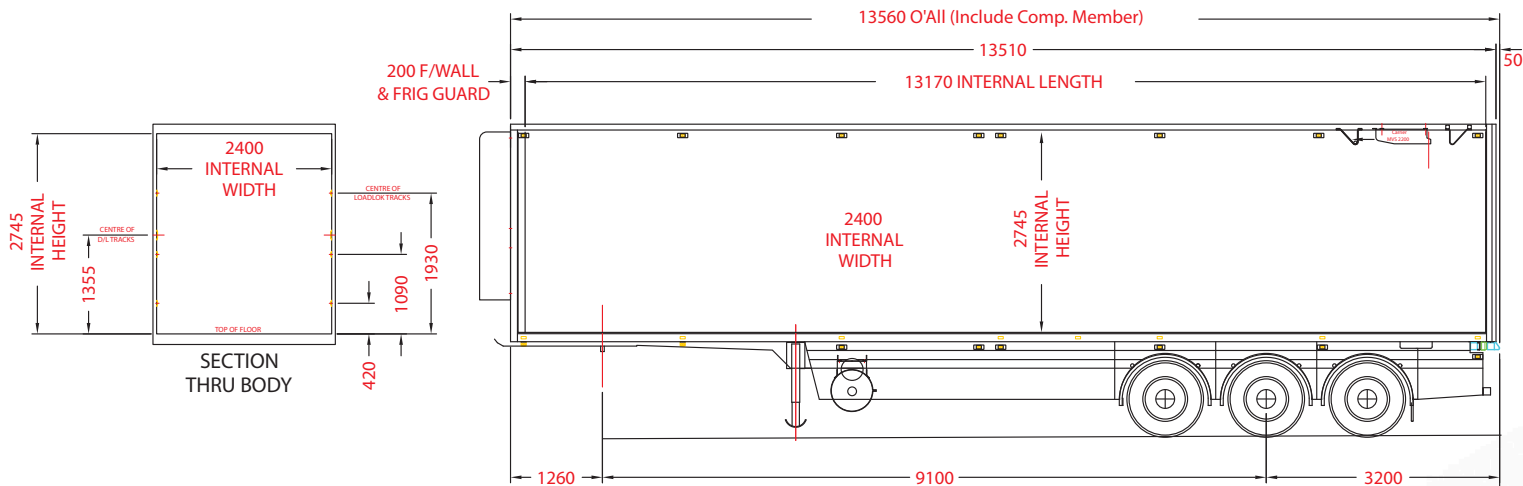
The “Arctic Star Montracon”
has full ADR Compliance



Full Australia Wide
Sales, Service, Parts & Warranty
Support by Southern Cross Vans

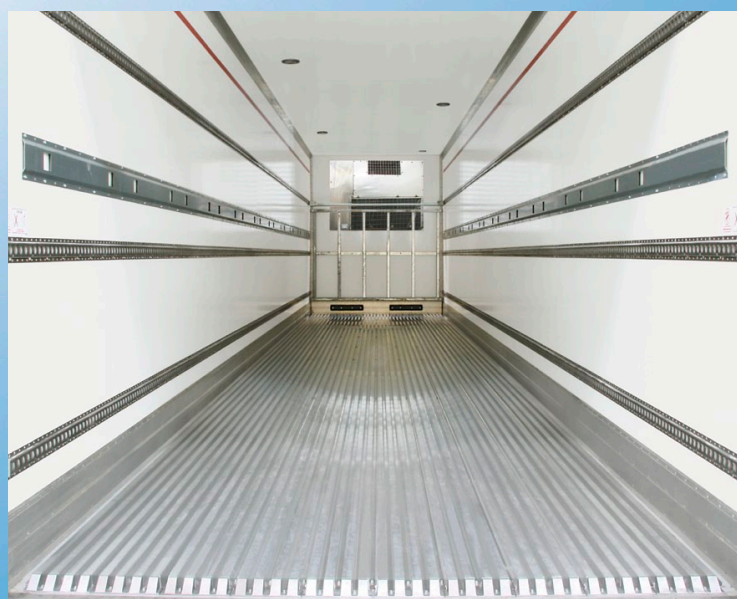
Discuss your requirements with our sales staff today.
They will help you gain the best value from your new Southern Cross equipment.

www.scteg.com.au



Dimensions	22 Pallet Tag 'B Trailer (Multi-Temp Provision)
Length	13560mm
Width	2500mm
Height	4300mm
Construction	
Chassis	Full Main Rail Chassis including full width skid plate, c/w ferry tie downs.
Front Wall	100mm Thick Insulated Mechanically fastened
Side Walls	40mm thick Styrofoam fitted with 3 rows of s/steel 'F' track and 6 x bars, mechanically fastened
Floor	Flat Fibreglass floor, (Optional - HPAFF or Aluminium distribution floor)
Roof	Styrofoam Insulated - 125mm Mechanically fastened, c/w 4 interior Hella L.E.D lights & Multi Temp Provision.
Double Loader	Full double loader walls, 'SXV' Track zinc plated and 22 double loader bars c/w storage box
Rear Doors	80mm Double rear doors with anti-racking, s/steel rear frame & polished s/steel door hardware
Rear Docking Member	Full width Rear Dock Compression Galvanized Steel Member incorporation solid rubber mounts
Aero Skirts	Side Under Run Fitted Option - Full underside "Aero" Skirts
Tool Box	1 x Fitted (optional)
Water Tank	1 x Fitted (optional)

Running Gear	
Suspension	BPW Airbag fitted with Eco-Plus or SAF-Intra Drum with parallel bearing axles 10/285 PCD drum brake axles, Raise/Lower Valve
Brakes	12V EBS/ABS Braking System
Landing Legs	Jost Modul 2 speed landing legs fitted with compensating flat feet.
Wheels	13 x Steel Wheels Option - Alcoa Aluminium Level 1 Polished look wheels
Tyres	13 x 11R 22.5 tyres
Electrical	
Lights	Hella L.E.D with dual 7 pin & 40 amp plugs standard
Paintwork	
Underside	2 pack IHC Red
Refrigeration Unit	
	Thermo King - SLX400/50 DE or Carrier Vector 1850 DE
Warranty	
	3 Years



SCTEG reserves the right to change specification information without notice, and accepts no liability, either direct or indirect for any loss that may result from the application of this information. Photographs may show equipment that is available at extra cost.



VIC / TAS / ACT
27-31 Thomas Murrell Cres,
Dandenong South, VIC, 3175
T (03) 9706 6080
E sales@vans.scteg.com.au

S.A / NSW / NT
9-15 Manthorpe Street,
Dry Creek, SA, 5094
T (08) 8405 7600
E sales@trailers.scteg.com.au

W.A
10 Eva Street,
Maddington WA, 6109
T 0419 242 911
E aaron@trailers.scteg.com.au

QLD
182 Tile Street,
Wacol, Queensland, 4076
T 0428 125 722
E gregh@scteg.com.au