



ARCTIC STAR REFRIGERATED PRODUCT RANGE

ARCTIC STAR -28° FREEZER

CONFIGURATIONS

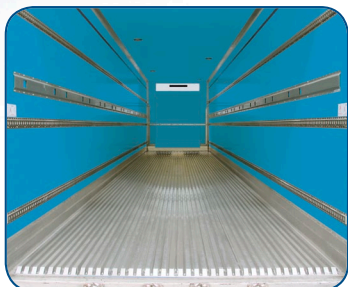
- MULTI-TEMP
- DOUBLE LOADER
- B-DOUBLE
- ROAD TRAIN
- FULL MAINRAIL CHASSIS
- 10P/12P LEAD
- 16P/20P/22P/24P REAR



Southern Cross Vans

BUILDS BETTER BODIES

Fully tailored to meet not just today's but tomorrow's demanding freight handling needs, designed to deliver the strongest and longest lasting outcomes, with the most advanced thermal qualities on the market today ensuring correct temperature control for your customers freight. Built to promote your image and status in the transport industry.

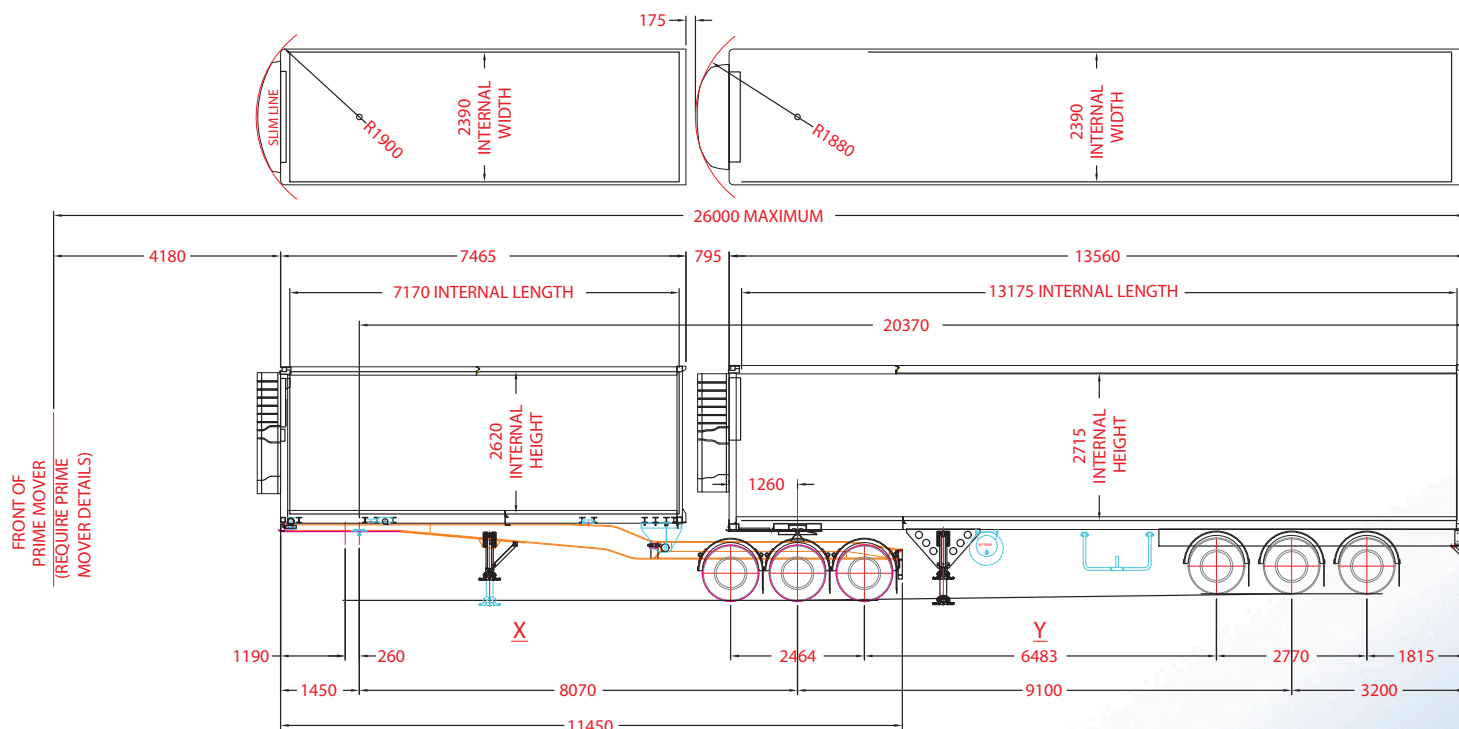


Construction

- Galvanized Rear Frame
- Galvanized Steel Cross Members
- Galvanized Reinforced Front Lead in plate
- Galvanized Reinforced Landing Leg Mounting Assembly
- Fully Laminated Internal Joints (Resin/Glass/ Mechanical Fixing Construction)
- Top quality rigid polyurethane foam, 36kg per cubic meters density.
- Our panels & skins are 100% made in house using the latest manufacturing techniques



Discuss your requirements with our sales staff today.
They will help you gain the best value from your new Southern Cross equipment.



Dimensions		12 Pallet Lead 'A' Trailer	
Length	7465mm		
Width	2500mm		
Height	4300mm		
Construction			
Roll Back Chassis	The rollback body is operated by a 12-volt motor driving a 50mm wide double duplex chain with hydraulic power pack. The body rolls on six hardened steel rollers and is locked by two selectamatic locking pins. "Anderson" plug power connector.		
Front Wall	100mm Insulated Polyurethane		
Side Walls	38mm thick with 3 rows of 'F' track and 3 x bars		
Floor	105mm Thick Insulation, Galvanised Cross-members Options - • Flat fibreglass floor • Aluminium distribution floor • High profile air flow floor • No slip finishes		
Roof	75mm thick insulation, c/w 3 interior L.E.D lights		
Double Loader (optional)	Reinforced double loader walls, 'SXV' Track zinc plated and 12 double loader bars c/w storage box		
Rear Doors	55mm Insulated doors with Galvanized Rear Frame		
Turn Table	50mm Holland Hitch greased 5th wheel std.		
Guards	Truckmate plastic radius guards		
Tool Box	1 x 1200mm long with stainless 'T' handles		
Water Tank	1 x 60L Aluminium		
Running Gear			
Suspension	BPW or SAF standard, Drum Brake Axles, Raise/Lower Valve Option - Disc Brake Axles		
Landing Legs	Jost 2 speed landing legs fitted with compensating flat feet.		
Wheels	To clients specification		
Tyres	To clients specification		
Electrical			
Lights	L.E.D with dual 7 pin & 40 amp plugs standard		
Paintwork			
Underside	2 pack to clients colours		
Refrigeration Unit			
Carrier or Thermo King			

22 Pallet Tag 'B Trailer	
Dimensions	
Length	13560mm
Width	2500mm
Height	4300mm
Construction	
Chassis	Monocoque Design Options - • Full Main Rail Chassis • Chassis Extensions
Front Wall	100mm Insulated Polyurethane
Side Walls	38mm thick with 3 rows of 'F' track and 6 x bars
Floor	105mm Thick Insulation, Galvanised Cross-members
Roof	125mm thick insulation, c/w 4 interior L.E.D lights Option - Multi Temp with rear evaporator guard.
Double Loader (optional)	Reinforced double loader walls, 'SXV' Track zinc plated and 22 double loader bars c/w storage box
Rear Doors	80mm Insulated doors with Galvanized Rear Frame
Guards	Truckmate plastic radius guards 'B' double compliant
Tool Box	1 x 1200mm long with stainless 'T' handles
Water Tank	1 x 60L Aluminium
Running Gear	
Suspension	BPW or SAF standard, Drum Brake Axles, Raise/Lower Valve Option - Disc Brake Axles
Landing Legs	Jost 2 speed landing legs fitted with compensating flat feet.
Wheels	To clients specification
Tyres	To clients specification
Electrical	
Lights	L.E.D with dual 7 pin & 40 amp plugs standard
Paintwork	
Underside	2 pack to clients colours
Refrigeration Unit	
Carrier or Thermo King	
Warranty	
3 Years	

SCTEG reserves the right to change specification information without notice, and accepts no liability, either direct or indirect for any loss that may result from the application of this information. Photographs may show equipment that is available at extra cost.