



ARCTIC STAR REFRIGERATED PRODUCT RANGE

ARCTIC STAR -18° SUPER CHILLER

CONFIGURATIONS

- MULTI-TEMP
- DOUBLE LOADER
- B-DOUBLE
- ROAD TRAIN
- FULL MAINRAIL CHASSIS
- 10P/12P LEAD
- 16P/20P/22P/24P REAR



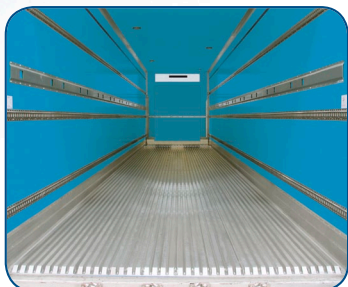
Southern Cross Vans

BUILDS BETTER BODIES

Fully tailored to meet not just today's but tomorrow's demanding freight handling needs, designed to deliver the strongest and longest lasting outcomes, with the most advanced thermal qualities on the market today ensuring correct temperature control for your customers freight. Built to promote your image and status in the transport industry.



Roller Door Optional

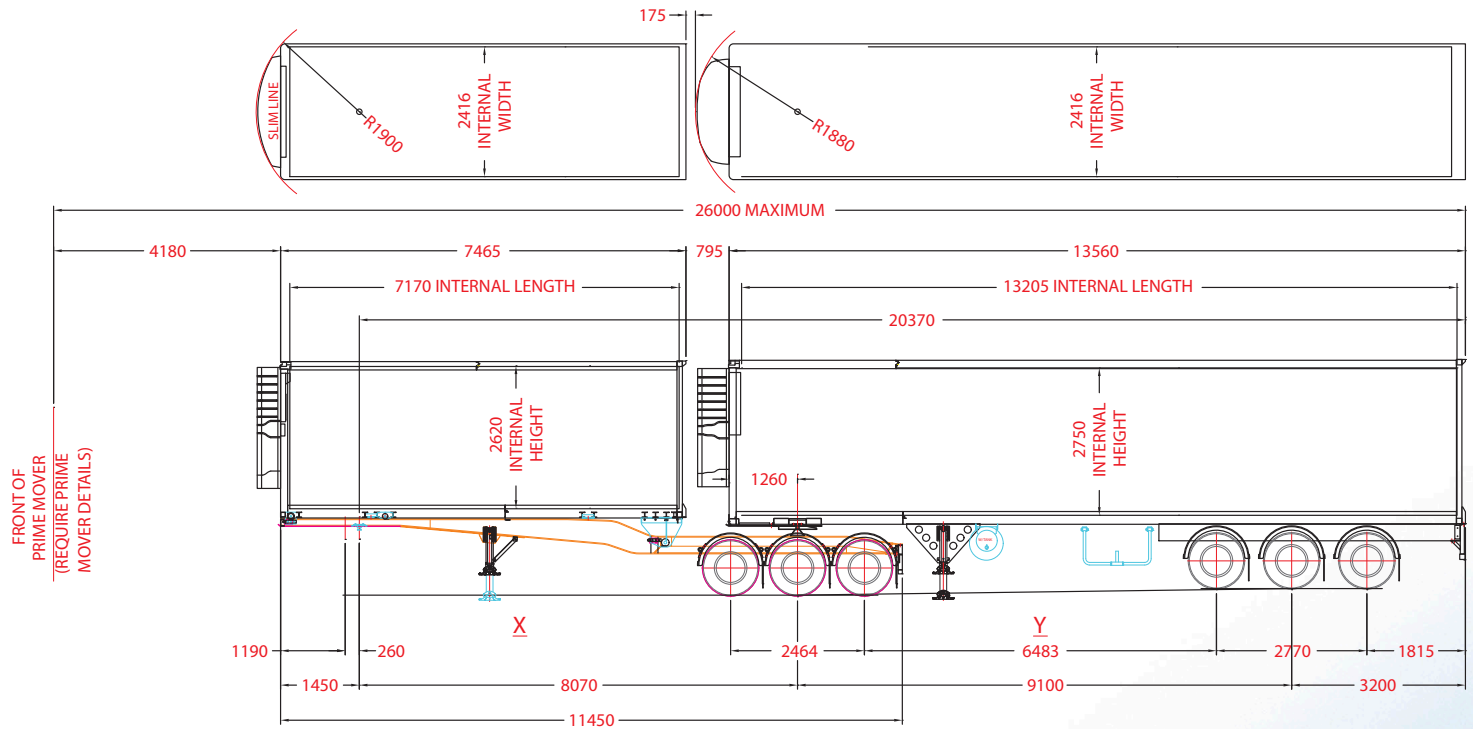


Construction

- Galvanized Rear Frame
- Galvanized Steel Cross Members
- Galvanized Reinforced Front Lead in plate
- Galvanized Reinforced Landing Leg Mounting Assembly
- Fully Laminated Internal Joints (Resin/Glass/ Mechanical Fixing Construction)
- Top quality rigid polyurethane foam, 36kg per cubic meters density.
- Our panels & skins are 100% made in house using the latest manufacturing techniques



Discuss your requirements with our sales staff today.
They will help you gain the best value from your new Southern Cross equipment.



Dimensions		12 Pallet Lead 'A' Trailer
Length		7465mm
Width		2500mm
Height		4300mm
Construction		
Roll Back Chassis		The rollback body is operated by a 12-volt motor driving a 50mm wide double duplex chain with hydraulic power pack. The body rolls on six hardened steel rollers and is locked by two selectamatic locking pins. "Anderson" plug power connector.
Front Wall		100mm Insulated Polyurethane
Side Walls		25mm thick with 3 rows of 'F' track and 3 x bars
Floor		105mm Thick Insulation, Galvanised Cross-members Options - • Flat fibreglass floor • Aluminium distribution floor • High profile air flr floor • No slip finishes
Roof		75mm thick insulation, c/w 3 interior L.E.D lights
Double Loader (optional)		Reinforced double loader walls, 'SXV' Track zinc plated and 12 double loader bars c/w storage box
Rear Doors		55mm Insulated doors with Galvanized Rear Frame
Turn Table		50mm Holland Hitch greased 5th wheel std.
Guards		Truckmate plastic radius guards
Tool Box		1 x 1200mm long with stainless 'T' handles
Water Tank		1 x 60L Aluminium
Running Gear		
Suspension		BPW or SAF standard, Drum Brake Axles, Raise/Lower Valve Option - Disc Brake Axles
Landing Legs		Jost 2 speed landing legs fitted with compensating flat feet.
Wheels		To clients specification
Tyres		To clients specification
Electrical		
Lights		L.E.D with dual 7 pin & 40 amp plugs standard
Paintwork		
Underside		2 pack to clients colours
Refrigeration Unit		
Carrier or Thermo King		

Dimensions		22 Pallet Tag 'B' Trailer
Length		13560mm
Width		2500mm
Height		4300mm
Construction		
Chassis		Monocoque Design Options - • Full Main Rail Chassis • Chassis Extensions
Front Wall		100mm Insulated Polyurethane
Side Walls		25mm thick with 3 rows of 'F' track and 6 x bars
Floor		105mm Thick Insulation, Galvanised Cross-members
Roof		75mm thick insulation, c/w 4 interior L.E.D lights Option - Multi Temp with rear evaporator guard.
Double Loader (optional)		Reinforced double loader walls, 'SXV' Track zinc plated and 22 double loader bars c/w storage box
Rear Doors		55mm Insulated with Galvanized Rear Frame
Guards		Truckmate plastic radius guards 'B' double compliant
Tool Box		1 x 1200mm long with stainless 'T' handles
Water Tank		1 x 60L Aluminium
Running Gear		
Suspension		BPW or SAF standard, Drum Brake Axles, Raise/Lower Valve Option - Disc Brake Axles
Landing Legs		Jost 2 speed landing legs fitted with compensating flat feet.
Wheels		To clients specification
Tyres		To clients specification
Electrical		
Lights		L.E.D with dual 7 pin & 40 amp plugs standard
Paintwork		
Underside		2 pack to clients colours
Refrigeration Unit		
Carrier or Thermo King		
Warranty		
3 Years		

SCTEG reserves the right to change specification information without notice, and accepts no liability, either direct or indirect for any loss that may result from the application of this information. Photographs may show equipment that is available at extra cost.