



## ARCTIC STAR RIGID PRODUCT RANGE

### ARCTIC STAR

**-28° FREEZER**

**-22° REEFER**

**-18° SUPER CHILLER**

#### CONFIGURATIONS

- MULTI-TEMP
- ALUMINIUM DISTRIBUTION FLOORS
- HIGH PROFILE AIR FLOW FLOOR
- FIBREGLOSS NON-SLIP FLOOR
- MEAT HANGERS



**Southern Cross Vans**

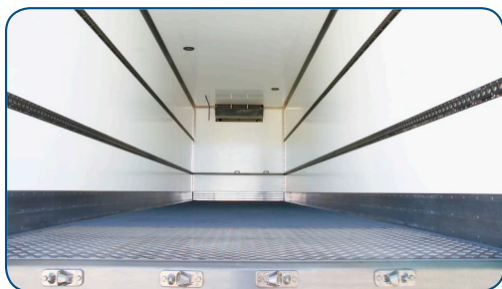
## BUILDS BETTER BODIES

Fully tailored to meet not just today's but tomorrow's demanding freight handling needs, designed to deliver the strongest and longest lasting outcomes, with the most advanced thermal qualities on the market today ensuring correct temperature control for your customers freight. Built to promote your image and status in the transport industry.



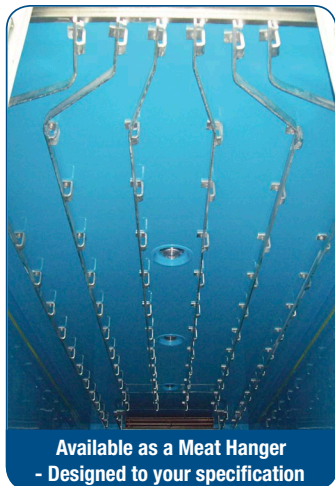
#### Construction

- Galvanized Rear Frame
- Galvanized Steel Cross Members
- Fully Laminated Internal Joints (Resin/Glass/ Mechanical Fixing Construction)
- Top quality rigid polyurethane foam, 36kg per cubic meters density.
- Our panels & skins are 100% made in house using the latest manufacturing techniques
- Standard barn doors or optional roller doors
- Optional - Double (pallet) size side door.



Discuss your requirements with our sales staff today.  
They will help you gain the best value from your new Southern Cross equipment.





Available as a Meat Hanger  
- Designed to your specification



Optional - Double Side Door



Optional - Fold down step for side door



## Designed To Fit Customer Supplied Truck Chassis

Dimensions	Rigid Body
Length	Built to suit your requirements. Available in : 8P, 10P, 12P & 14P.
Width	2.5m
Internal Height	Built to suit your specification.
Construction	
Wall Construction	Moulded fibreglass incorporating woven roven and chopped strand mat. Bonded to rigid polyurethane foam with fibreglass ribs insulated between each block of foam.
Side Walls	Size to suit your temperature specification. <b>Optional</b> - Double side door.
Floor	Forklift and pallet jack rated flat fiberglass floor standard. <b>Optional</b> - High Profile Air Flow Floor and Aluminium Distribution Floor available.
Roof	Insulated to suit your temperature specification.
Rear Doors	Insulated to suit your temperature specification. Supplied complete with galvanised rear frame. <b>Optional</b> - Insulated roller door
Load Hold	2 rows of Galvanized steel 'F' Track load lock and 2 x pogo bars included standard.

### Chassis Fitment

Price includes fitment to customer supplied cab chassis.

### Refrigeration Unit

Southern Cross Vans can arrange fitment and commissioning of the desired unit - Thermo King or Carrier, at extra cost.

### Warranty

3 Years

- **Suitable for the largest fleets down to one truck operators.**



SCTEG reserves the right to change specification information without notice, and accepts no liability, either direct or indirect for any loss that may result from the application of this information. Purchasers must conduct their own enquiries to ensure that the products are suitable for their own particular purposes. Any comments made regarding products and construction are made on an information basis, not as a recommendation. Photographs may show equipment that is available at extra cost.

#### VIC / TAS

27-31 Thomas Murrell Cres,  
Dandenong South, VIC, 3175  
T (03) 9706 6080  
E sales@vans.scteg.com.au

#### S.A / NT

9-15 Manthorpe Street,  
Dry Creek, SA, 5094  
T (08) 8405 7600  
E sales@trailers.scteg.com.au

#### W.A

10 Eva Street,  
Maddington WA, 6109  
T 0419 242 911  
E aaron@trailers.scteg.com.au

#### QLD

182 Tile Street,  
Wacol, Queensland, 4076  
T 0428 125 722  
E greg@scteg.com.au